



PORTIA 27



Lot 85, 8 Heroic Street
Drouin

Land Size: 540m² House Size: 27.7sq 257.7m²

Fixed Price

\$564,950

PROFINE LUXURY INCLUSIONS

- *Tiles to selected areas of the home
- *Carpet floor coverings to the balance of the home
- *2590mm ceiling height
- *900mm Cooktop and Rangehood to Kitchen
- *Stainless Steel 600mm Dishwasher and Oven to Kitchen
- *Remote Control Sectional Garage Door
- *Flyscreens to all openable windows and flywire to selected doors
- *10 x LED Downlights to selected areas, batten lights to rest
- *Premium 3 coat paint system to walls
- *20mm Stone Benchtops to Kitchen, Bathroom & Ensuite

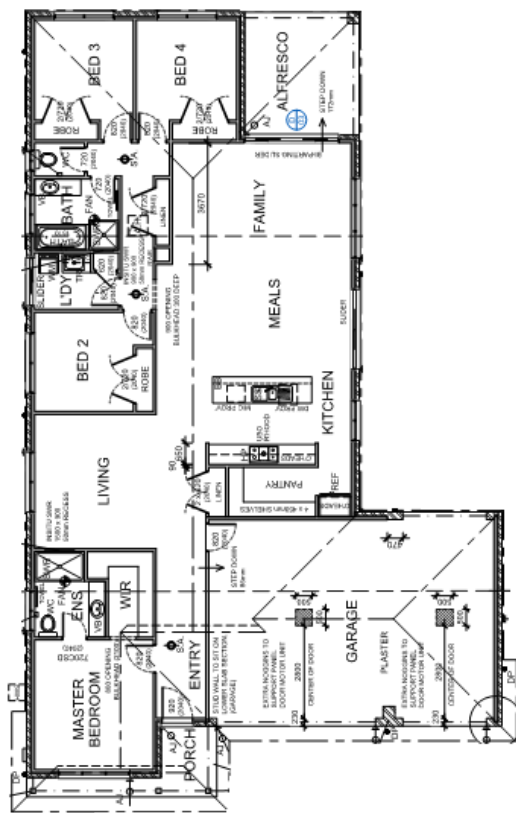
BUNDLE PACK INCLUSIONS

- *Fixed Site Costs and Developer Costs
- *Plain concrete to driveway
- *Your ½ share of fencing to sides and rear of lot
- *Front landscaping inclusive of garden bed with 10 different plants and turf
- *Rear landscaping with top soil and seed, concrete and crushed rock to sides of home
- *Letterbox and Clothesline to match Developer Guidelines
- *Holland blinds to all windows



Bundle Pack included

You don't have to worry about your fences, driveway, landscaping or blinds. We do it for no extra cost!



Profine Building Group

Head Office
3 Dallas Court
Hallam 3803
Ph: (03) 9796 3944
Info@profine.com.au
www.profine.com.au

Price is current as at 13/03/20. Pricing includes Standard inclusions range plus current promotion upgrades. Price based upon developers engineering plans and plan of subdivision. Sales consultant to confirm land availability prior to purchase. Subject to developer and council approval. Alterations may be made however may incur a cost. Profine reserves the right to withdraw package or alter price without notice. Images are for illustrative purposes and may depict upgrade options available at additional charges such as flooring, blinds, lights etc. Refer to working drawings